

SAUTER

Bacnet Touch Module





SAUTER Mobile Studio 2.7





News

Performance Increased:

- **Possibility to use 2 BACnet driver simultaneously** (1 for BACnet-IP and 1 for BACnet MS/TP)
- **Number of Pages;**
- **Number of Trends;**
- **Doubled the Trend Buffer;**
- **OPC UA driver;**

New Firmware Available:

- **Chromium Firmware** for the direct connection to **SVC / mWV / AS525** without Engineering (Suggested installation on 10 inch panel for better usability)



News on Graphic

- **NCO Connection for Alarm widget:** The Alarms are directly connected to the Notification Class. The engineering of the Alarm definition is reduced at minimum.
- **Table Widget:** This widget allows to easily create Tables that are dinamically populated by the Touch panel with the associated Tags

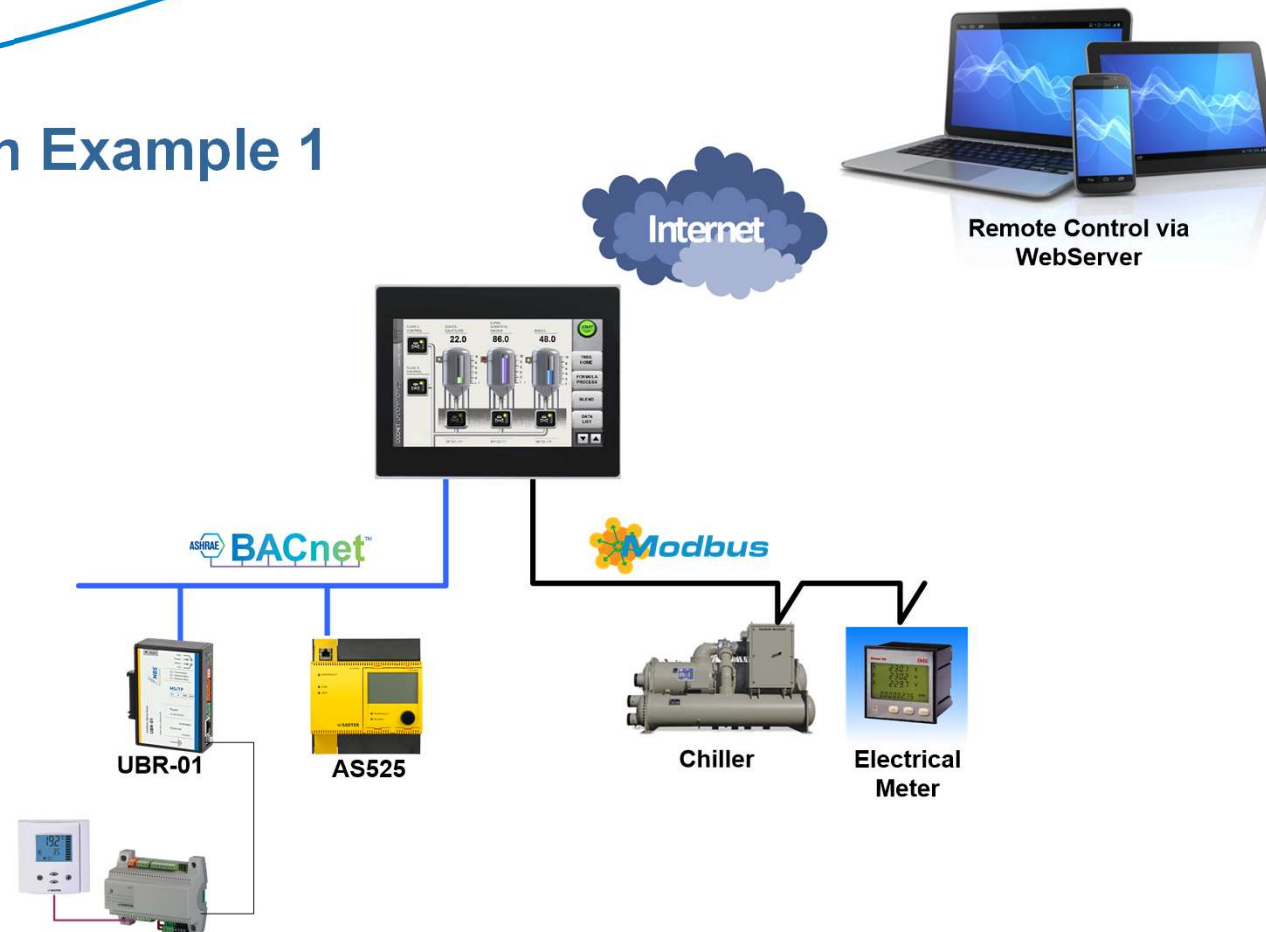


News Web Graphic

- **Trends:** Trends widget are now available also on the Web pages
- **Recipe:** Recipe widget are now available also on the Web pages
- **Schedule Widget:** Actually under development

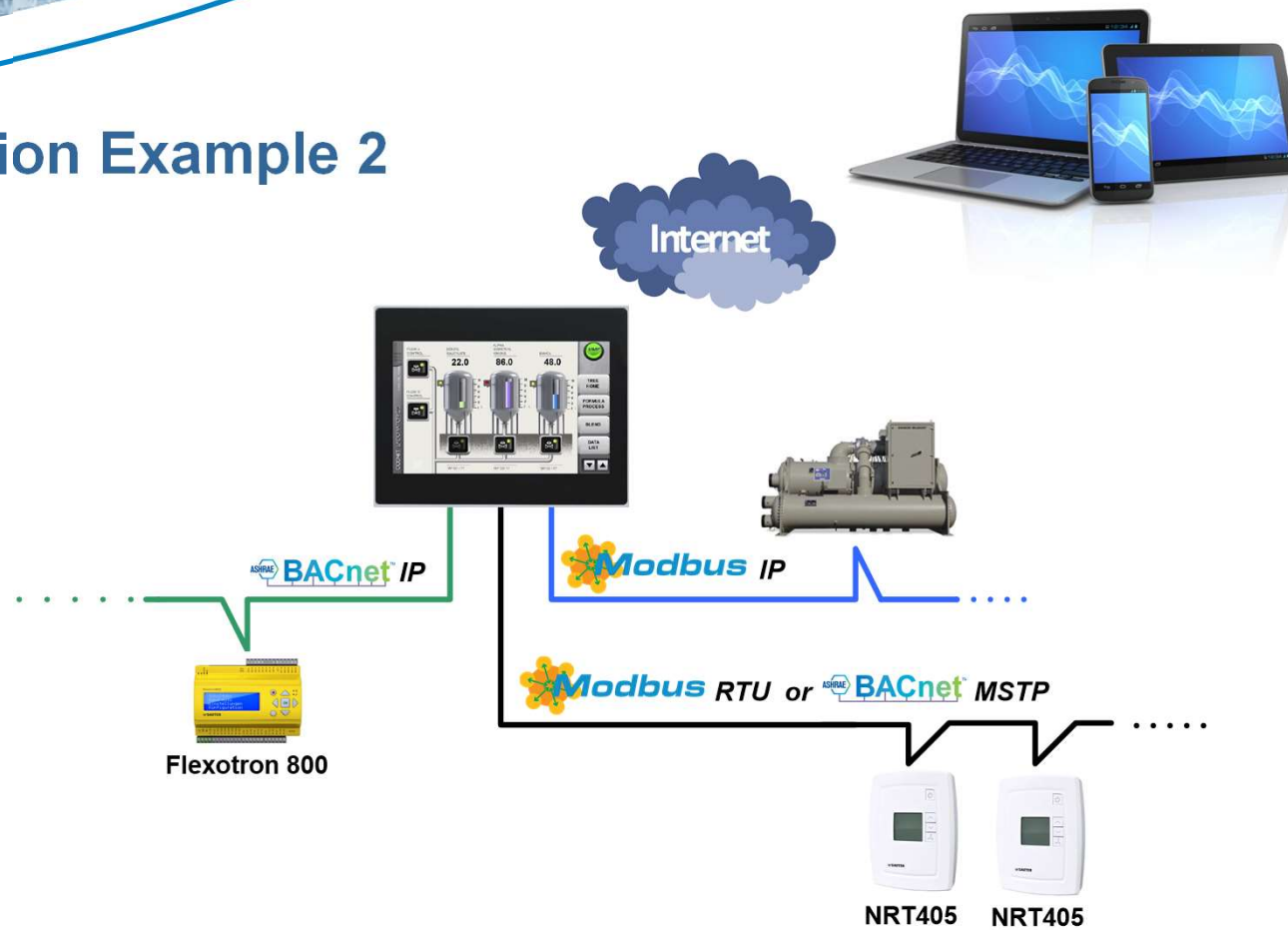


Application Example 1



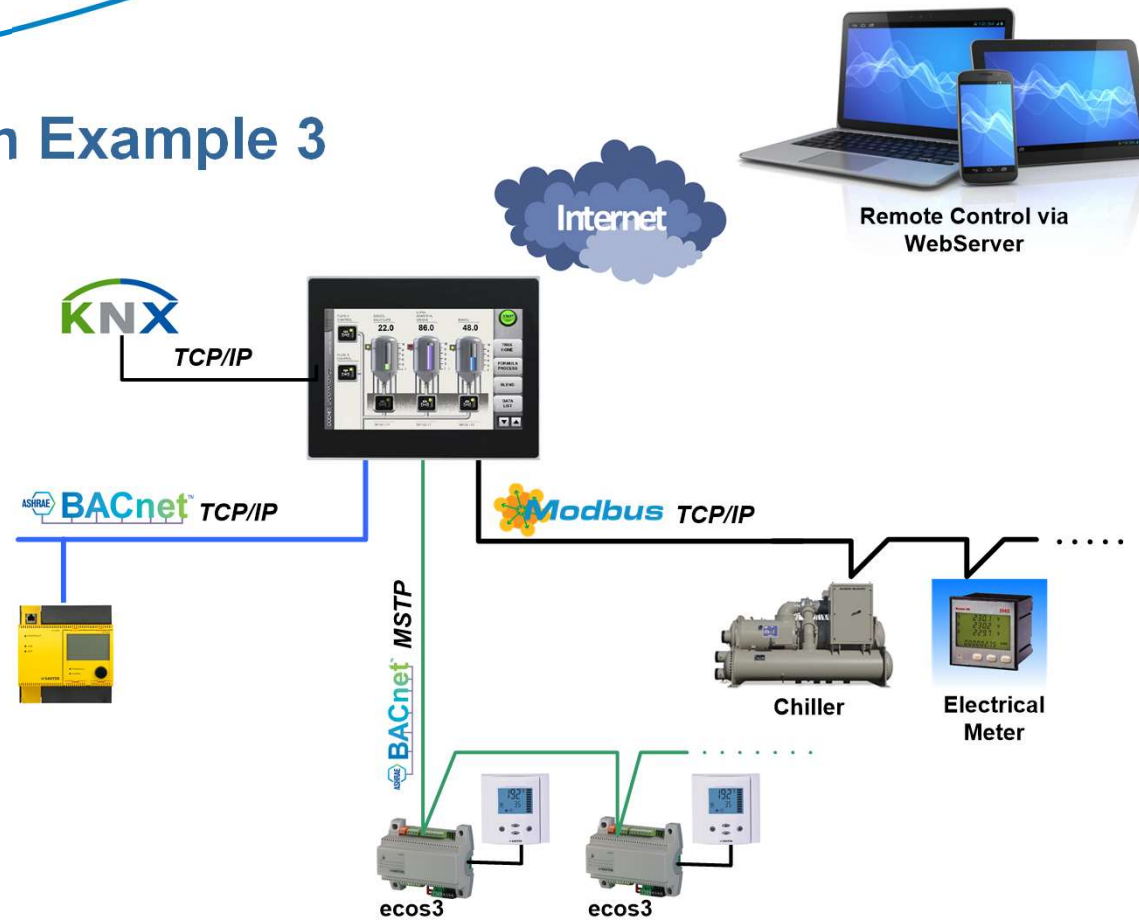


Application Example 2



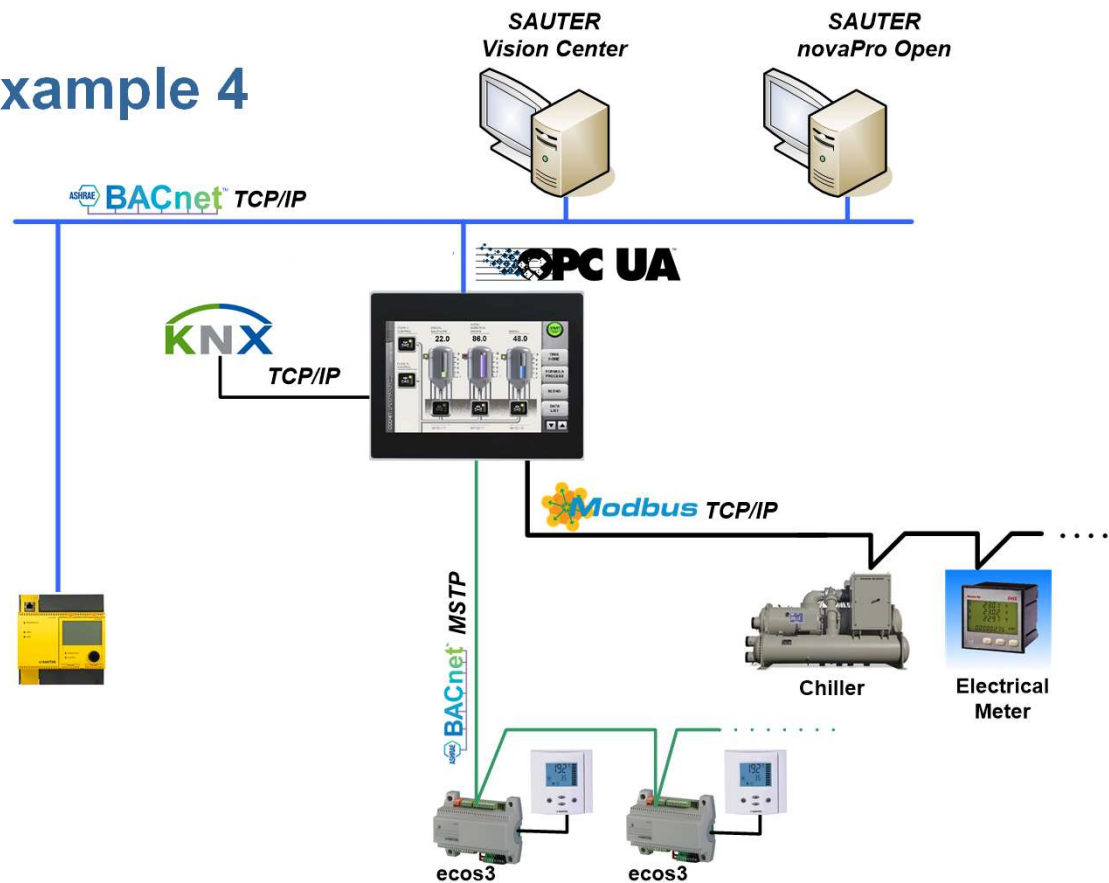


Application Example 3





Application Example 4





The diagram illustrates a BACnet system architecture, categorized into three main layers: Management, Automation, and Field.

- Management Layer:** Includes Weather Forecast, SAUTER moduWeb Vision, SAUTER Vision Center, SAUTER EMS, and SAUTER novaPro Open. It also shows connections to Security/Access, Hotel/Booking, Fire/Safety, and Transportation/Lift.
- Automation Layer:** Features various controllers and gateways, including modu250, moduNet300, moduNet292, moduNet40, modu525, modu521, modu520, moduNet800, moduNet2, moduNet230, and moduNet40. It also includes a BACnet Router and a BACnet MS/TP Router.
- Field Layer:** Includes weather stations, ecoLink, ecoUnit 3, ecoUnit 2, ecoUnit 1, ecoMod580, ecoUnit 3, ecoUnit 1, ecoUnit 2, and ecoUnit 1. It also shows connections to a 3rd Party EcoOcean and a BACnet MS/TP Router.

Three red circles highlight specific components in the diagram:

- The first circle highlights the modu525, modu521, and modu520 controllers.
- The second circle highlights the ecoMod580, ecoUnit 3, ecoUnit 1, and ecoUnit 2 units.
- The third circle highlights the ecoUnit 3, ecoUnit 2, and ecoUnit 1 units.



Thanks for the Attention!